

VILLAGE OF BRATENAHL  
CONCEPT REFINEMENT (8 CONCEPTS)





1 Bratenahl Center Plan - Option 1A.2  
1/16" = 1'-0"

**Concept 1A.2 - Campus Center (1 Site)**



**All services located at Bratenahl Center - Renovation + Addition**

Attributes		Ease of Community Access	Economic Development Opportunities	Urban Context	Police Access	Bratenahl Civic Campus	Community Perception/Enhancement	Require a Temporary Facility	Site Layout and Topography	Storm Water	Cost: Initial	Life Expectancy of a Facility	Operation and Maintenance Cost	Program Functionality	Code Compliance	Total
Concept	Description									?			?			
Concept 1A.2	All services located at Bratenahl Center, Renovate existing + Small Addition	Neutral (0)	Neutral (0)	Positive (+1)	Positive (+1)	Positive (+1)	Neutral (0)	Positive (+1)	Positive (+1)		Positive (+1)	Negative (-1)		Positive (+1)	Neutral (0)	6

**OPINION OF PROBABLE PROJECT COST \$6,000,000 - \$8,500,000**

Millage = 4 Mills - 5 Mills

**Bratenahl Feasibility Study**

Village of Bratenahl  
Concept 1A.2 - Campus Center



**Concept 1A.1 - Campus Center (1 Site)**



**All services located at Bratenahl Center - Renovation + Addition**

	Attributes	Ease of Community Access	Economic Development Opportunities	Urban Context	Police Access	Bratenahl Civic Campus	Community Perception/Enhancement	Require a Temporary Facility	Site Layout and Topography	Storm Water	Cost: Initial	Life Expectancy of a Facility	Operation and Maintenance Cost	Program Functionality	Code Compliance	Total
Concept	Description									?			?			
Concept 1A.1	All services located at Bratenahl Center. Renovate existing + Addition	Neutral (0)	Neutral (0)	Positive (+1)	Positive (+1)	Positive (+1)	Neutral (0)	Positive (+1)	Positive (+1)		Negative (-1)	Negative (-1)		Positive (+1)	Neutral (0)	4

**OPINION OF PROBABLE PROJECT COST \$10,500,000 - \$14,800,000**

**Millage = 6 Mills - 8 Mills**

**Bratenahl Feasibility Study**

Village of Bratenahl  
Concept 1A.1 - Campus Center

04/07/2022



© Copyright 2022 DS Architecture, LLC. All rights reserved.

**Concept 1B.1 - Campus Center (1 Site)**



**All services located at Village Hall Site - New Construction, 2 Buildings**

Concept	Description	Ease of Community Access	Economic Development Opportunities	Urban Context	Police Access	Bratenahl Civic Campus	Community Perception/Enhancement	Require a Temporary Facility	Site Layout and Topography	Storm Water	Cost: Initial	Life Expectancy of a Facility	Operation and Maintenance Cost	Program Functionality	Code Compliance	Total
Concept 1B.1	All services located at Village Hall. All new construction, 2 buildings	Positive (+1)	Positive (+1)	Neutral (0)	Neutral (0)	Positive (+1)	Positive (+1)	Negative (-1)	Neutral (0)	?	Negative (-1)	Positive (+1)	?	Positive (+1)	Positive (+1)	5

**OPINION OF PROBABLE PROJECT COST \$10,000,000 - \$14,500,000**

**Millage = 6 Mills - 8 Mills**

**Concept 1A - Campus Center (1 Site)**



**All services located at Bratenahl Center - New Construction**

	Attributes	Ease of Community Access	Economic Development Opportunities	Urban Context	Police Access	Bratenahl Civic Campus	Community Perception/Enhancement	Require a Temporary Facility	Site Layout and Topography	Storm Water	Cost: Initial	Life Expectancy of a Facility	Operation and Maintenance Cost	Program Functionality	Code Compliance	Total
Concept	Description									?			?			
Concept 1A	All services located at Bratenahl Center. All new construction.	Neutral (0)	Neutral (0)	Positive (+1)	Positive (+1)	Positive (+1)	Positive (+1)	Positive (+1)	Positive (+1)		Negative (-1)	Positive (+1)		Positive (+1)	Positive (+1)	8

**OPINION OF PROBABLE PROJECT COST \$16,700,000 - \$24,200,000**  
 Millage = 9 Mills - 12 Mills

**Concept 3A - Hybrid (2 Sites)**



**Rec to remain at Community Center**



**Village Admin and Police at Bratenahl Center - Renovation + Addition**

Attributes		Ease of Community Access	Economic Development Opportunities	Urban Context	Police Access	Bratenahl Civic Campus	Community Perception/Enhancement	Require a Temporary Facility	Site Layout and Topography	Storm Water	Cost: Initial	Life Expectancy of a Facility	Operation and Maintenance Cost	Program Functionality	Code Compliance	Total
Concept	Description									?			?			
Concept 3A	Rec at Community Center, Police/Admin at Bratenahl Center - Addition	Positive (+1)	Negative (-1)	Neutral (0)	Positive (+1)	Neutral (0)	Neutral (0)	Negative (-1)	Positive (+1)		Positive (+1)	Negative (-1)		Positive (+1)	Negative (-1)	1

**OPINION OF PROBABLE PROJECT COST \$8,500,000 - \$20,000,000**  
 Millage = 5 Mills - 10.5 Mills

**Concept 3A.1 - Hybrid (2 Sites)**



**Rec to remain at Community Center**



**Village Admin and Police at Bratenahl Center - New Construction**

Attributes		Ease of Community Access	Economic Development Opportunities	Urban Context	Police Access	Bratenahl Civic Campus	Community Perception/Enhancement	Require a Temporary Facility	Site Layout and Topography	Storm Water	Cost: Initial	Life Expectancy of a Facility	Operation and Maintenance Cost	Program Functionality	Code Compliance	Total
Concept	Description									?			?			
Concept 3A.1	Rec at Community Center, Police/Admin at Bratenahl Center - New Construction	Positive (+1)	Negative (-1)	Neutral (0)	Positive (+1)	Neutral (0)	Positive (+1)	Negative (-1)	Positive (+1)		Positive (+1)	Neutral (0)		Positive (+1)	Neutral (0)	4

**OPINION OF PROBABLE PROJECT COST \$9,400,000 - \$21,800,000**  
 Millage = 5.5 Mills - 11 Mills

**Concept 3B.1 - Hybrid (2 Sites)**



**Rec at Village Hall Site - New Construction**



**Village Admin and Police at Bratenahl Center - Renovation + Addition**

	Attributes	Ease of Community Access	Economic Development Opportunities	Urban Context	Police Access	Bratenahl Civic Campus	Community Perception/Enhancement	Require a Temporary Facility	Site Layout and Topography	Storm Water	Cost: Initial	Life Expectancy of a Facility	Operation and Maintenance Cost	Program Functionality	Code Compliance	Total
Concept	Description									?			?			
Concept 3B.1	Rec at Village Park, Police/Admin at Bratenahl Center - New Construction	Positive (+1)	Neutral (0)	Positive (+1)	Positive (+1)	Neutral (0)	Positive (+1)	Positive (+1)	Positive (+1)		Negative (-1)	Positive (+1)		Positive (+1)	Positive (+1)	8

**OPINION OF PROBABLE PROJECT COST \$16,700,000 - \$24,200,000**  
 Millage = 9 Mills - 12 Mills

**Bratenahl Feasibility Study**

Village of Bratenahl  
 Concept 3B.1 - Hybrid

04/07/2022

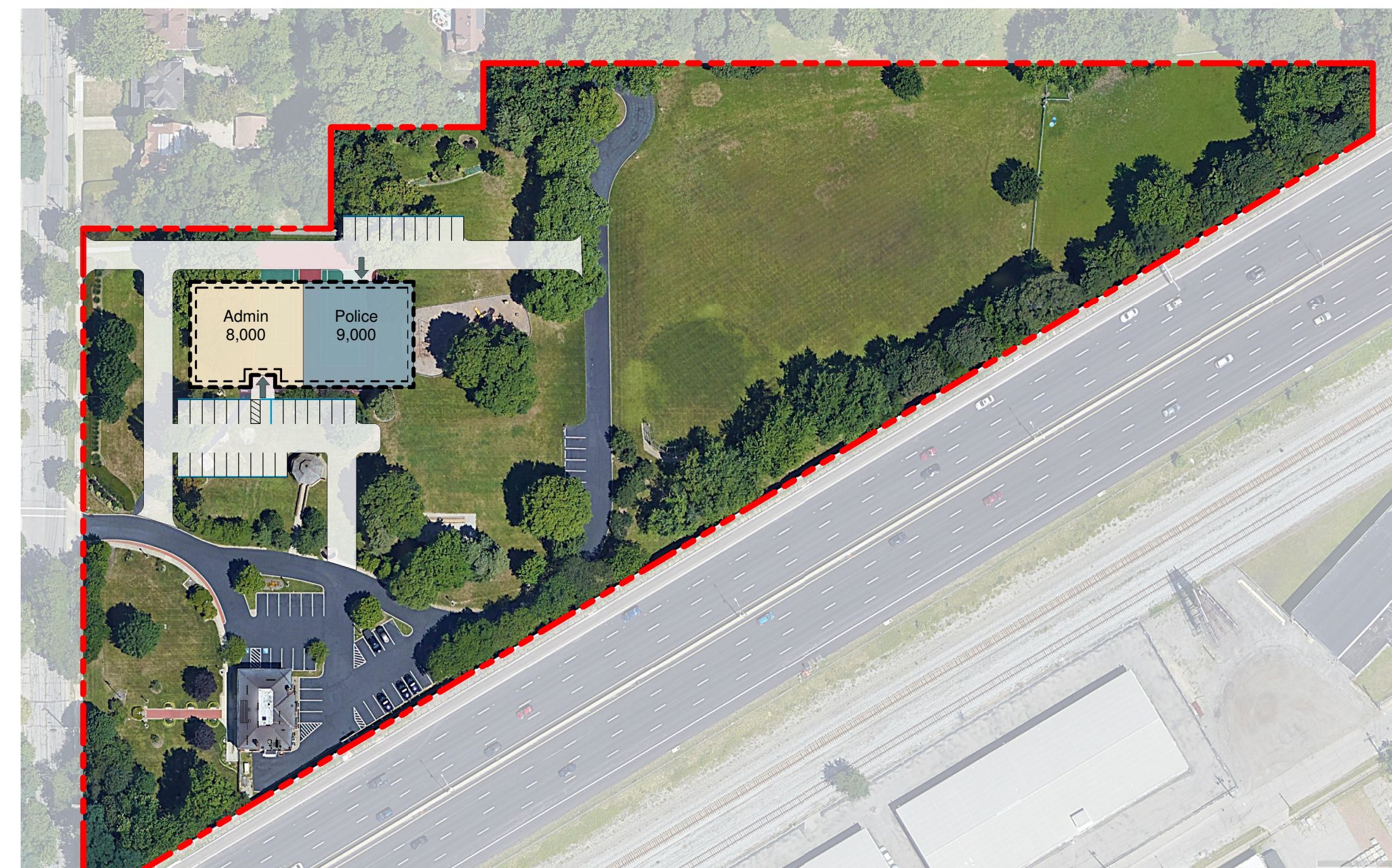


© Copyright 2022 DS Architecture, LLC. All rights reserved.

**Concept 3D - Hybrid (2 Sites)**



**Rec to remain at Community Center**



**Village Admin and Police at Village Hall Site - New Construction**

Attributes		Ease of Community Access	Economic Development Opportunities	Urban Context	Police Access	Bratenahl Civic Campus	Community Perception/Enhancement	Require a Temporary Facility	Site Layout and Topography	Storm Water	Cost: Initial	Life Expectancy of a Facility	Operation and Maintenance Cost	Program Functionality	Code Compliance	Total
<b>Concept</b>	<b>Description</b>									?			?			
Concept 3D	Rec at Community Center, Police/Admin at Village Hall - New Construction	Neutral (0)	Neutral (0)	Neutral (0)	Neutral (0)	Neutral (0)	Positive (+1)	Neutral (0)	Neutral (0)		Positive (+1)	Neutral (0)		Positive (+1)	Neutral (0)	3

**OPINION OF PROBABLE PROJECT COST \$9,300,000 - \$21,600,000**  
 Millage = 5.5 Mills - 11 Mills

**Bratenahl Feasibility Study**

Village of Bratenahl  
 Concept 3D - Hybrid

04/07/2022



© Copyright 2022 DS Architecture, LLC. All rights reserved.