

VILLAGE OF BRATENAHL

VILLAGE CENTER – COMMUNITY ENGAGEMENT

05.16.2022



AGENDA

Welcome

- Introductions

Where We've Been

- Project History

Where We Are

- Concept Development

Where We're Going

- Visioning Session

PROJECT TEAM



WHERE WE'VE BEEN



Service Garage

8,000 SF

- Studied/Assessed in June 2015 Report - Building in poor conditions, recommended relocating
- Possible land uses studied - residential redevelopment
- New Service Garage built in 2018

Community Center

31,000 SF

- Studied/Assessed in June 2015 Report - More beneficial to keep/preserve
- Expanded senior programming desired
- Additional Space Programming Study Jan 2017
- Possible uses studied - Rec Only, Rec/Admin, Rec/Admin/Revenue, Divest

Village Hall

4,500 SF

- Studied/Assessed in June 2015 Report - Options recommended, mainly Police only use
- Preliminary Programming study determined not sufficient space for Police needs
- Many land use ideas studied
- Desired central location for all external Village functions

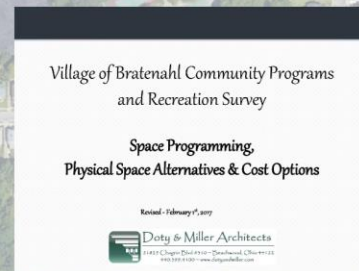
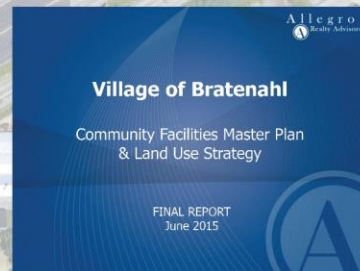
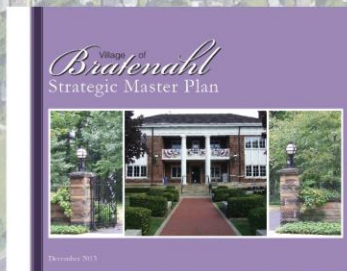
Previous Studies



Former H.S. Site (Bratenahl Center)

14,600 SF

- Studied in June 2015 Report - Options recommended, Village Admin, but still needed Educational Component
- General Conditions Assessed in 2020/2021
- Structure is solid but uses of building are limited
- Centrally located




DS ARCHITECTURE



Our History Working Together

- Working Together Since 2016
- Trust, Comfort-Level

Local Presence | National Recognition

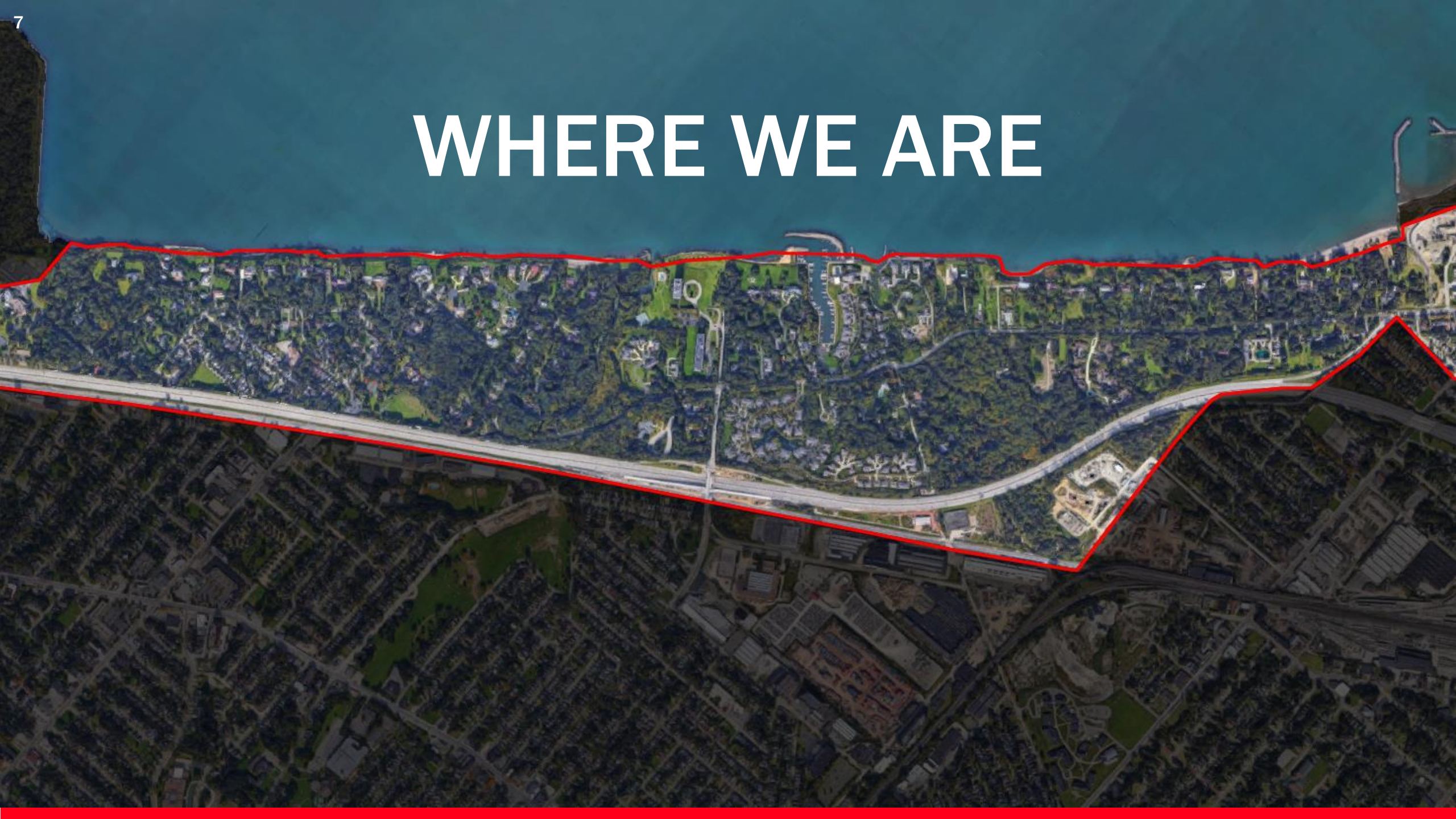
- Design Awards | Design Juries
- Cleveland Police Owner's Rep

Understanding Police Station Design

- Specialized Designs
- Safety and Security
- Reduce Liability
- Space that Promotes Occupant Wellness
- Positive Interactions with Police & Public



WHERE WE ARE



SITE ANALYSIS



Community Center



Village Hall





Old High School Site (Bratenahl Center)

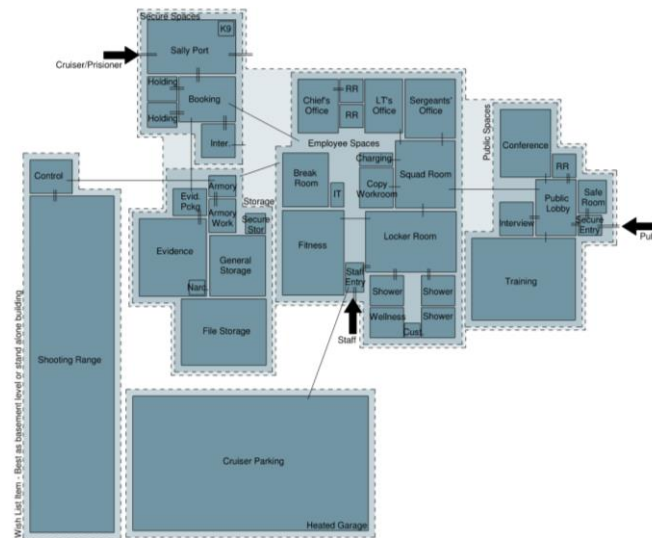
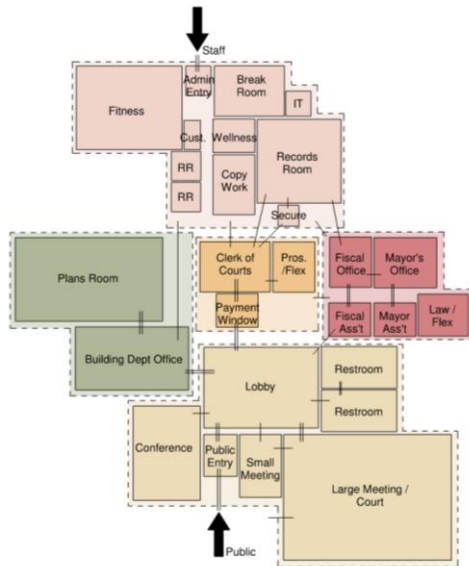


Service Garage



PROGRAM ANALYSIS

	EXISTING	PROGRAM	COMMENTS
Program Areas	Total Area (sq. ft.)	Total Area (sq. ft.)	
Village Administration	2,985	8,158	
Police	2,347	11,463	
Recreation	27,700	20,599	

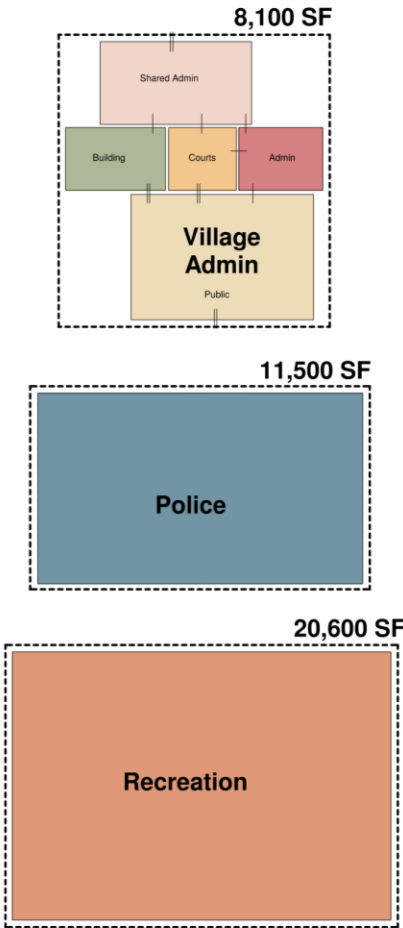


CONCEPT DEVELOPMENT

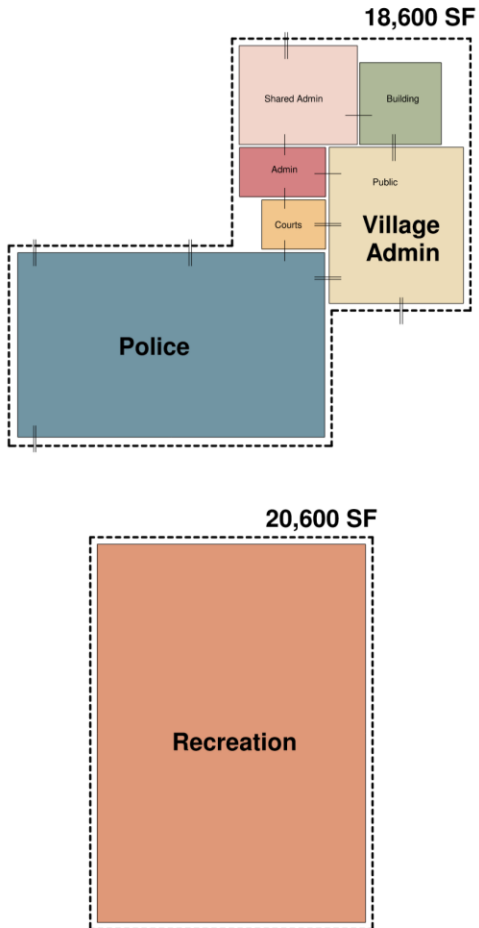
Concept 1 - Campus Center



Concept 2 - Separate



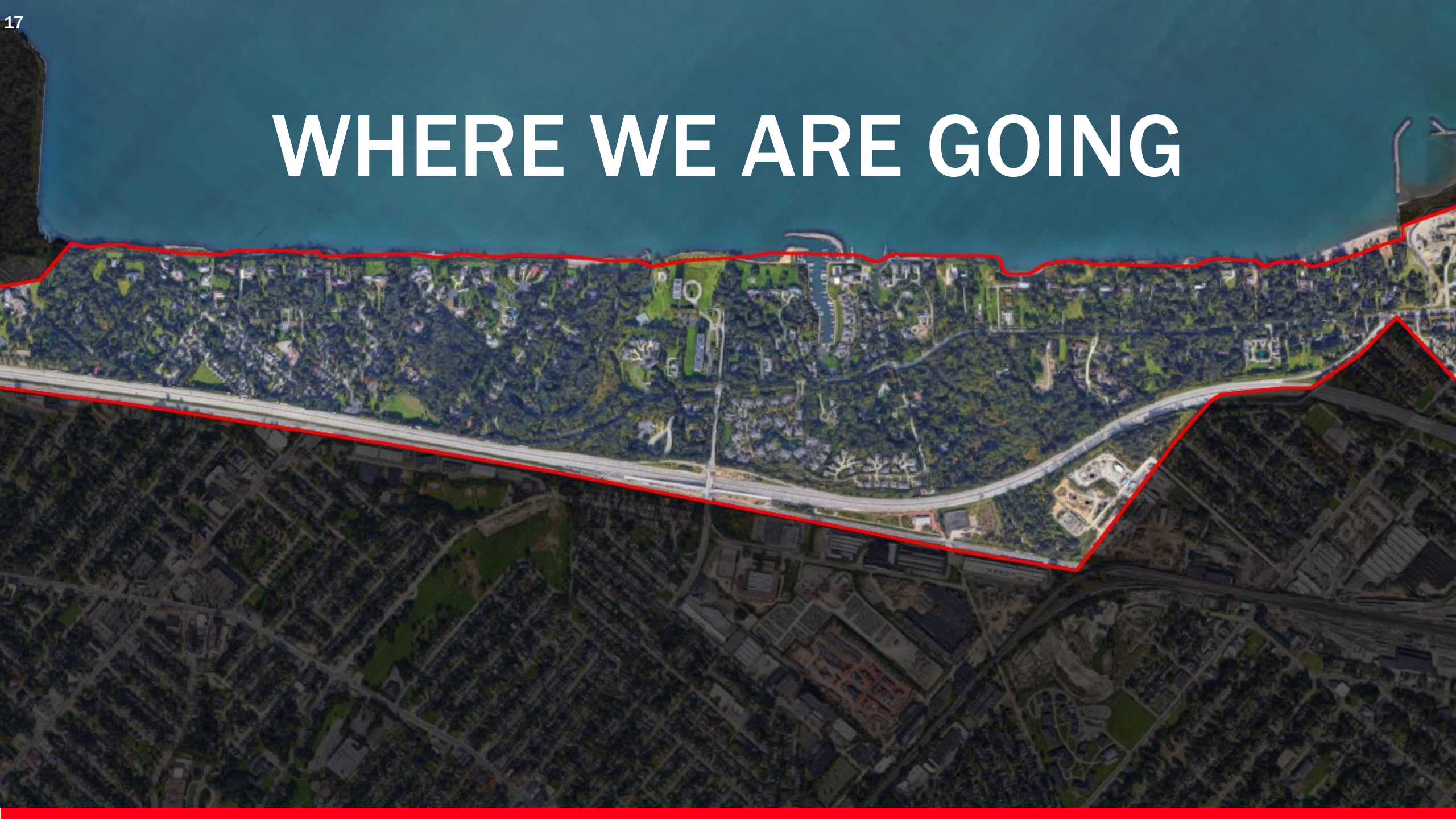
Concept 3 - Hybrid



CONCEPT ANALYSIS

	Attributes	Ease of Community Access	Economic Development Opportunities	Urban Context	Police Access	Bratenahl Civic Campus	Community Perception/Enhancement	Require a Temporary Facility	Site Layout and Topography	Storm Water	Cost: Initial	Life Expectancy of a Facility	Operation and Maintenance Cost	Program Functionality	Code Compliance	Total
Concept	Description									?			?			
Concept 1A	All services located at Bratenahl Center. All new construction.	Neutral (0)	Neutral (0)	Positive (+1)	Positive (+1)	Positive (+1)	Positive (+1)	Positive (+1)	Positive (+1)		Negative (-1)	Positive (+1)		Positive (+1)	Positive (+1)	8
Concept 1A.1	All services located at Bratenahl Center. Renovate existing + Addition	Neutral (0)	Neutral (0)	Positive (+1)	Positive (+1)	Positive (+1)	Neutral (0)	Positive (+1)	Positive (+1)		Negative (-1)	Negative (-1)		Positive (+1)	Neutral (0)	4
Concept 1A.2	All services located at Bratenahl Center. Renovate existing + Small Addition	Neutral (0)	Neutral (0)	Positive (+1)	Positive (+1)	Positive (+1)	Neutral (0)	Positive (+1)	Positive (+1)		Positive (+1)	Negative (-1)		Positive (+1)	Neutral (0)	6
Concept 1B	All services located at Village Hall. All new construction.	Positive (+1)	Positive (+1)	Neutral (0)	Neutral (0)	Positive (+1)	Positive (+1)	Positive (+1)	Neutral (0)		Negative (-1)	Positive (+1)		Positive (+1)	Positive (+1)	7
Concept 1B.1	All services located at Village Hall. All new construction, 2 buildings	Positive (+1)	Positive (+1)	Neutral (0)	Neutral (0)	Positive (+1)	Positive (+1)	Negative (-1)	Neutral (0)		Negative (-1)	Positive (+1)		Positive (+1)	Positive (+1)	5
Concept 1C	All services located at Community Center. All new construction.	Negative (-1)	Negative (-1)	Negative (-1)	Negative (-1)	Positive (+1)	Neutral (0)	Negative (-1)	Negative (-1)		Negative (-1)	Positive (+1)		Positive (+1)	Positive (+1)	-3
Concept 1C.1	All services located at Community Center. Renovate existing + Addition	Negative (-1)	Negative (-1)	Negative (-1)	Negative (-1)	Positive (+1)	Negative (-1)	Negative (-1)	Negative (-1)		Negative (-1)	Negative (-1)		Positive (+1)	Negative (-1)	-8
Concept 2A	Rec at Community Center, Police at Village Hall and Admin at Bratenahl Center	Negative (-1)	Negative (-1)	Positive (+1)	Neutral (0)	Negative (-1)	Negative (-1)	Negative (-1)	Neutral (0)		Neutral (0)	Negative (-1)		Negative (-1)	Negative (-1)	-7
Concept 2B	Rec at Community Center, Police at Bratenahl Center and Admin at Village Hall	Negative (-1)	Negative (-1)	Neutral (0)	Positive (+1)	Negative (-1)	Negative (-1)	Negative (-1)	Neutral (0)		Neutral (0)	Negative (-1)		Negative (-1)	Negative (-1)	-7
Concept 3A	Rec at Community Center, Police/Admin at Bratenahl Center - Addition	Positive (+1)	Negative (-1)	Neutral (0)	Positive (+1)	Neutral (0)	Neutral (0)	Negative (-1)	Positive (+1)		Positive (+1)	Negative (-1)		Positive (+1)	Negative (-1)	1
Concept 3A.1	Rec at Community Center, Police/Admin at Bratenahl Center - New Construction	Positive (+1)	Negative (-1)	Neutral (0)	Positive (+1)	Neutral (0)	Positive (+1)	Negative (-1)	Positive (+1)		Positive (+1)	Neutral (0)		Positive (+1)	Neutral (0)	4
Concept 3B	Rec at Village Park, Police/Admin at Bratenahl Center - Addition	Positive (+1)	Neutral (0)	Positive (+1)	Positive (+1)	Neutral (0)	Neutral (0)	Positive (+1)	Positive (+1)		Neutral (0)	Neutral (0)		Positive (+1)	Neutral (0)	6
Concept 3B.1	Rec at Village Park, Police/Admin at Bratenahl Center - New Construction	Positive (+1)	Neutral (0)	Positive (+1)	Positive (+1)	Neutral (0)	Positive (+1)	Positive (+1)	Positive (+1)		Negative (-1)	Positive (+1)		Positive (+1)	Positive (+1)	8
Concept 3C	Rec at Bratenahl Center, Police/Admin at Village Hall	Neutral (0)	Neutral (0)	Negative (-1)	Neutral (0)	Neutral (0)	Neutral (0)	Negative (-1)	Neutral (0)		Negative (-1)	Neutral (0)		Positive (+1)	Neutral (0)	-2
Concept 3D	Rec at Community Center, Police/Admin at Village Hall - New Construction	Neutral (0)	Neutral (0)	Neutral (0)	Neutral (0)	Neutral (0)	Positive (+1)	Neutral (0)	Neutral (0)		Positive (+1)	Neutral (0)		Positive (+1)	Neutral (0)	3

WHERE WE ARE GOING



Recommendation 2

Concept 1A.1 - Campus Center (1 Site)



All services located at Bratenahl Center - Renovation + Addition

	Attributes	Ease of Community Access	Economic Development Opportunities	Urban Context	Police Access	Bratenahl Civic Campus	Community Perception/Enhancement	Require a Temporary Facility	Site Layout and Topography	Storm Water	Cost: Initial	Life Expectancy of a Facility	Operation and Maintenance Cost	Program Functionality	Code Compliance	Total
Concept	Description									?			?			
Concept 1A.1	All services located at Bratenahl Center. Renovate existing + Addition	Neutral (0)	Neutral (0)	Positive (+1)	Positive (+1)	Positive (+1)	Neutral (0)	Positive (+1)	Positive (+1)		Negative (-1)	Negative (-1)		Positive (+1)	Neutral (0)	4

OPINION OF PROBABLE PROJECT COST \$10,500,000 - \$14,800,000
MILLAGE = 6 MILLS - 8 MILLS

Recommendation 3

Concept 1B.1 - Campus Center (1 Site)



All services located at Village Hall Site - New Construction, 2 Buildings

Concept	Description	Attributes	Ease of Community Access	Economic Development Opportunities	Urban Context	Police Access	Bratenahl Civic Campus	Community Perception/Enhancement	Require a Temporary Facility	Site Layout and Topography	Storm Water	Cost: Initial	Life Expectancy of a Facility	Operation and Maintenance Cost	Program Functionality	Code Compliance	Total
Concept 1B.1	All services located at Village Hall. All new construction, 2 buildings		Positive (+1)	Positive (+1)	Neutral (0)	Neutral (0)	Positive (+1)	Positive (+1)	Negative (-1)	Neutral (0)		Negative (-1)	Positive (+1)		Positive (+1)	Positive (+1)	5

OPINION OF PROBABLE PROJECT COST \$10,000,000 - \$14,500,000
MILLAGE = 6 MILLS - 8 MILLS

VISIONING SESSION

Critical Success Factors

CRITICAL SUCCESS FACTORS



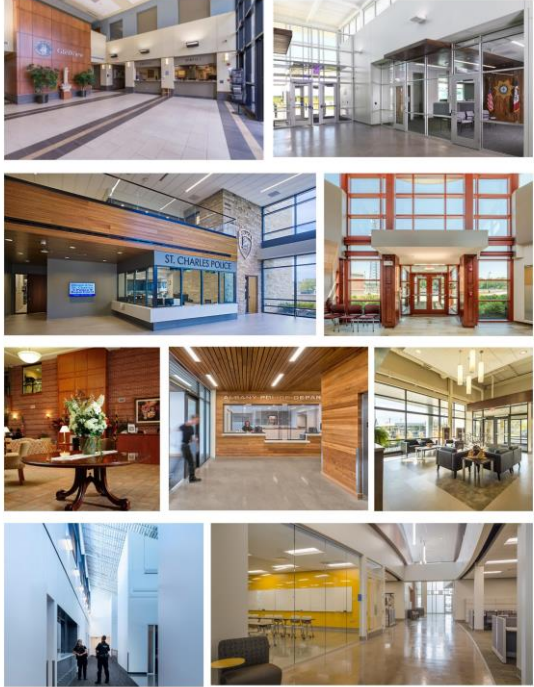
- Innovative Facility
- Practical
- Memorable
- Affordable
- Generational
- Sustainable
- Traditional
- Inclusive
- Inviting Community
- Positive Connection with Community
- Enhance
- Fosters a Sense of Community
- Adaptability
- Reflective of City Mission
- Supports State of the Art Technology
- Supportive Atmosphere
- A Good Neighbor
- Improves Staff Work
- Beautiful
- Completion
- Confidence
- Longevity
- Well Deserved
- Protect
- Attracts and Retains
- Safe and Secure

Visual Listening

VISUAL LISTENING BUILDING EXTERIOR



VISUAL LISTENING BUILDING INTERIOR



VILLAGE OF BRATENAHL

THANK YOU

